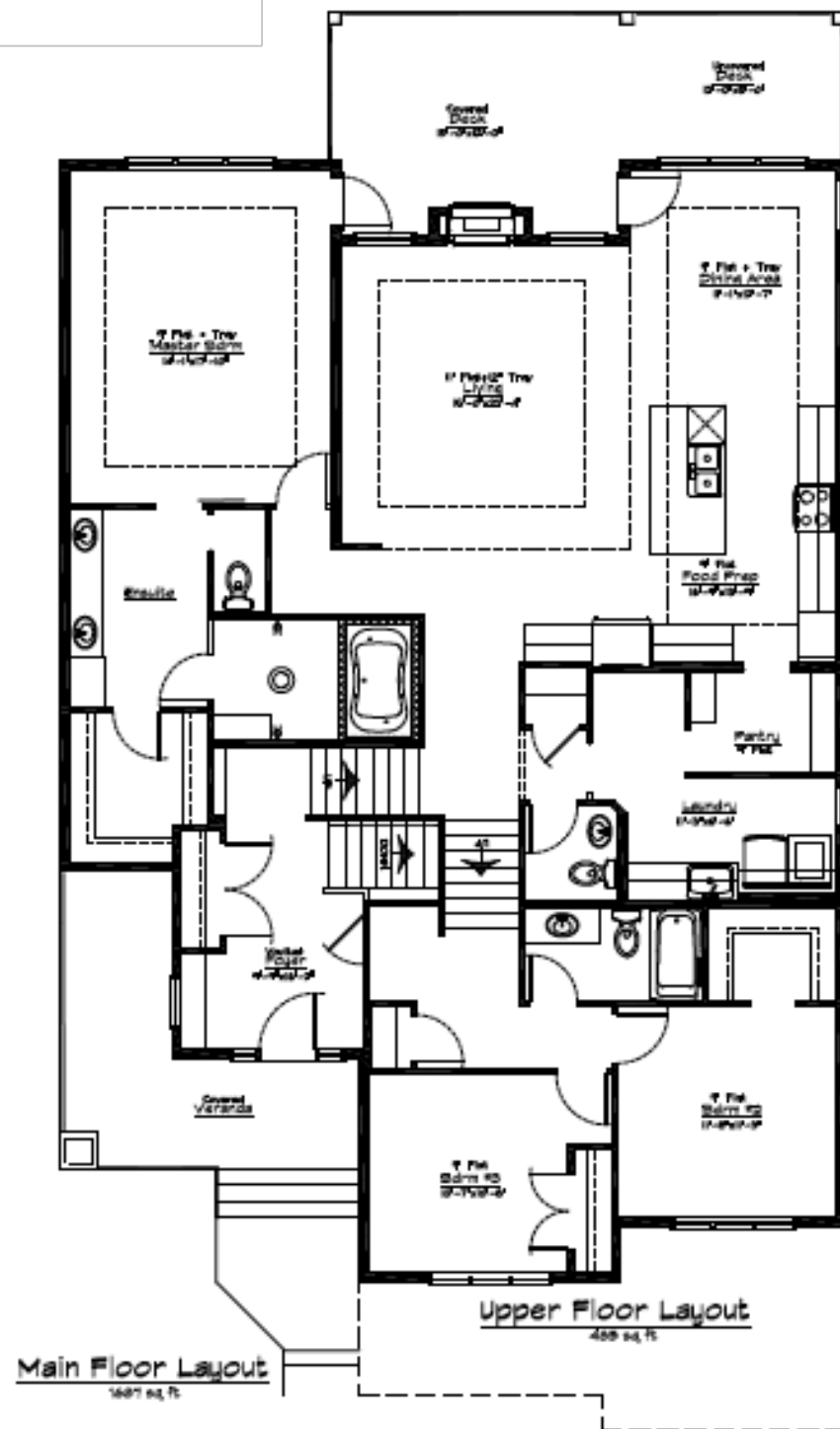


The Bruno

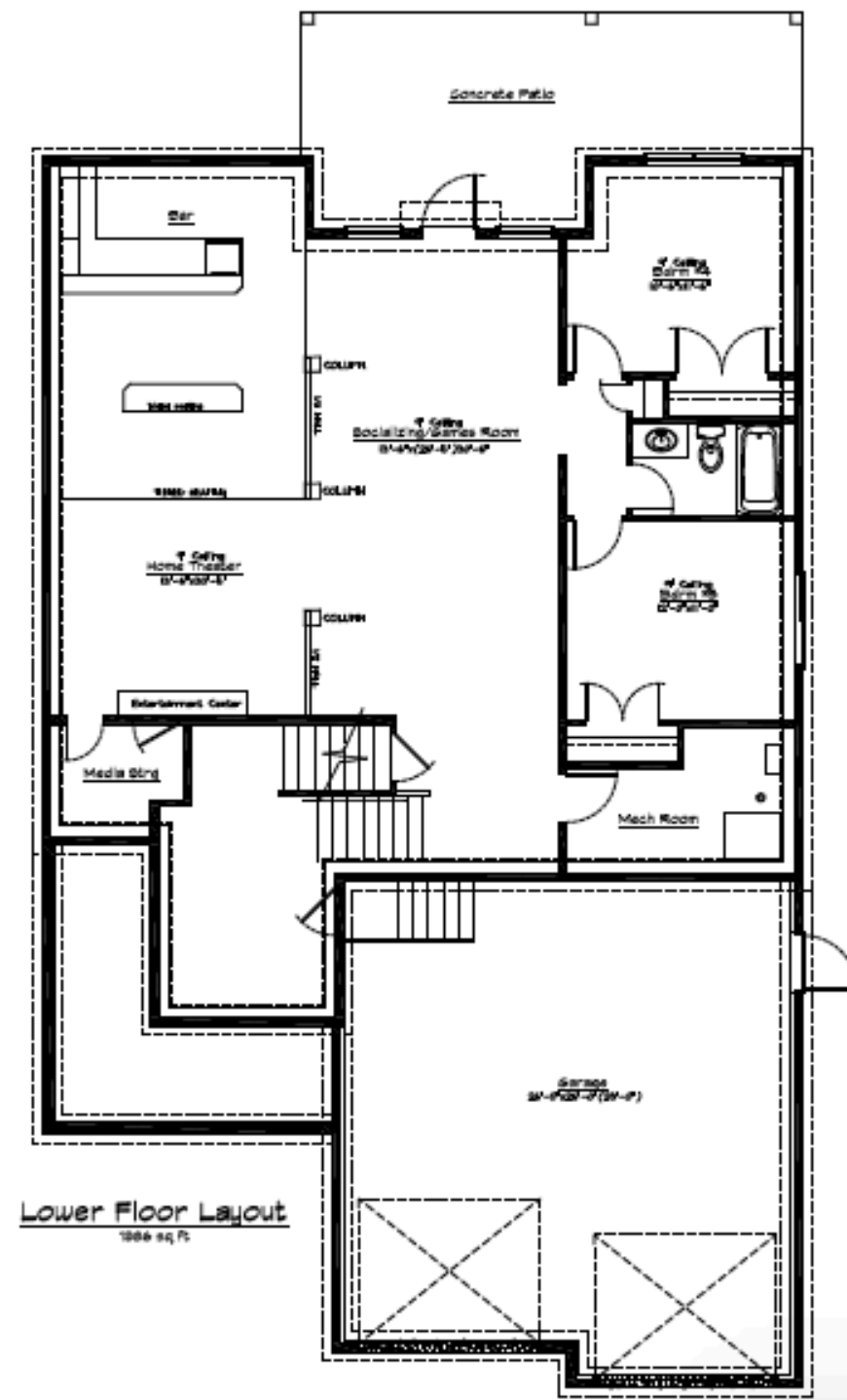
2172 SQ FT



5P CUSTOM
BUILT
HOMES



Main & Upper Floor
- 2172 SQ FT



Basement
Development
- 1386 SQ FT

Features:

- 5 beds, 3.5 baths
- Fully developed w/ heated & insulated finished garage
- Control4 Home Automation
- Luxurious kitchen w/ GE Café Professional appliance package
- Indoor outdoor see through fireplace
- Master bedroom w/ spa-like en suite & a TOTO Washlet toilet seat
- En suite w/In-floor & a walk in closet with custom closet shelving
- Relax-A-Mist steam shower and air jet tub combo
- Ultimate entertainment w/ theater tiered seating, wet bar, and in-ceiling surround sound speakers
- 9' ceiling height throughout
- Fully landscaped front yard w/ underground sprinklers
- Basement walkout
- High efficiency hot water on demand
- Air Conditioning
- Dual car garage w/ side door access

*"You want a home, not a house.
We know the difference."*



This feature sheet is designed by 5P Custom Built Homes, all right reserved, including the right of reproduction in whole or in part. Details may vary by specification and elevation and may be subject to change without notice. © 2016 5P Custom Built Homes. For more information on floorplans and ideas visit our website at 5pshomes.com, contact by phone at 1-403-382-0392.